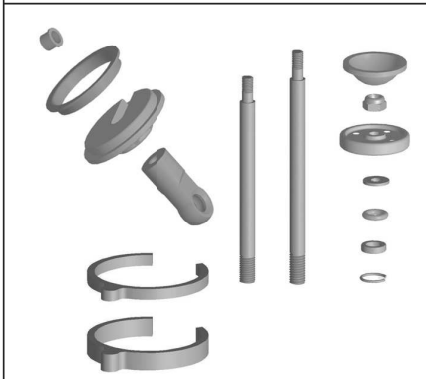
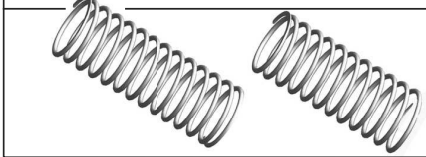


Spare Parts
Ersatzteile
Pièces détachées
Recambios
Ricambi

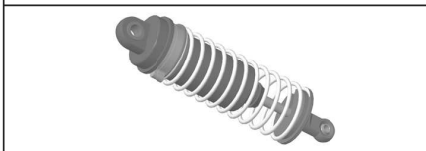
305158 Damper-repairkit
Dämpferreparaturset



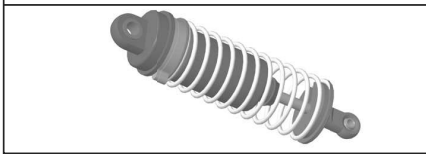
305159 4x Shock spring set
4x Dämpferfedern-Set



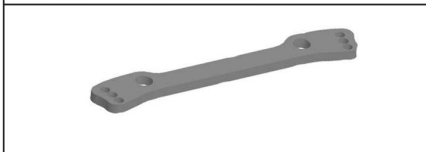
305160 2x Front damper
2x Stoßdämpfer vorne



305161 2x Rear damper
2x Stoßdämpfer hinten



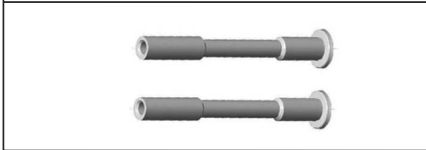
305162 Steering plate
Lenkplatte



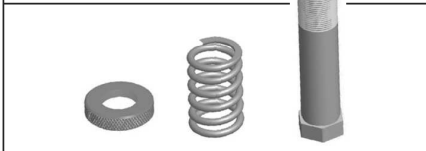
305163 2x Steering stud
2x Bolzen Lenkung



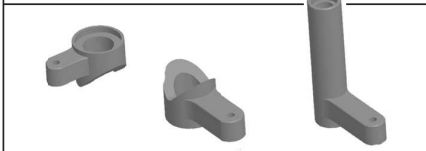
305164 2x Steering-post
2x Lenkpfosten



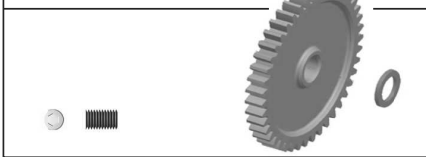
305165 Servosaver part 1
Servosaver Teil 1



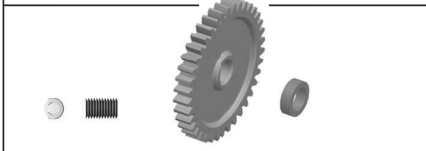
305166 Servosaver part 2
Servosaver Teil 2



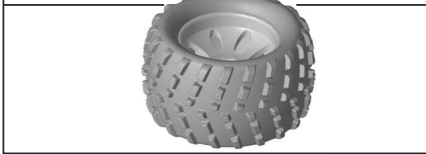
305167 Gear 43 T
Zahnrad 43 Z



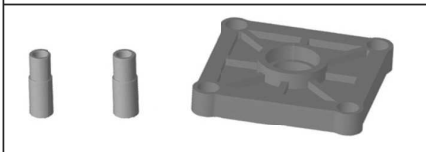
305168 Gear 37 T
Zahnrad 37 Zähne



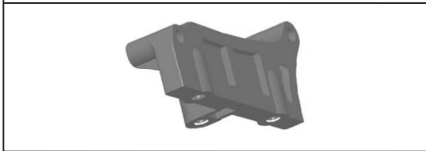
305169 2x GAS DEVIL tire set
2x GAS DEVIL Reifenset



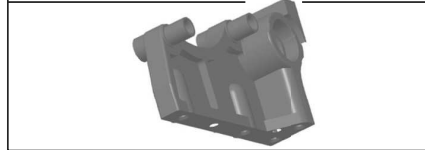
305170 Gear plate
Getriebeplatte



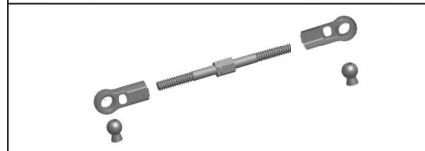
305171 Engine bearer 1
Motorhalter 1



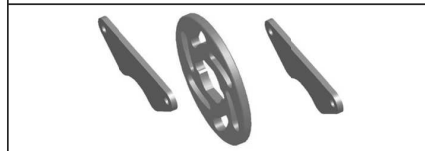
305172 Engine bearer 2
Motorhalter 2



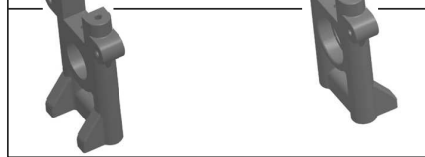
305173 Linkage (servo-steering)
Gestänge Servolenkung



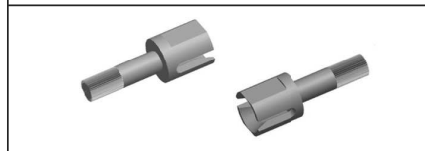
305174 Breakdisc + pads
Bremscheibe + -backen



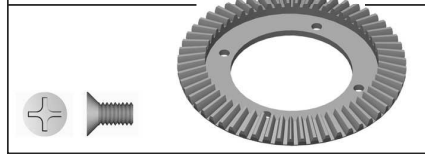
305175 2x Centermount
2x Mitteldiffböcke



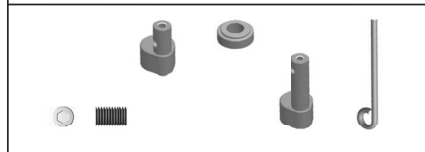
305176 2x Centerdiff-joint
2x Mitnehmer Mitteldiff



305177 Main gear centerdiff 57 T
Zahnrad Mitteldiff 57 Zähne



305178 Brakelever
Bremshebel



Continuation Spare Parts • Ersatzteile Fortsetzung


<p>305179 Throttle/brake rod set Gas/ Bremsgestänge-Set</p>	<p>305186 2x Suspension holder 1 2x Querlenkerhalter 1</p>	<p>305194 Bumper-brace Versteifung Frontrammer</p>
<p>305180 Centerdiff-plate Mitteldiffplatte</p>	<p>305187 2x Suspension holder 2 2x Querlenkerhalter 2</p>	<p>305195 2x Suspension arms front under 2x Querlenker unten vorne</p>
<p>305181 Steering hub Lenkgestänge</p>	<p>305188 Rod Gewindestange</p>	<p>305196 2x Suspension arms rear under 2x Querlenker unten hinten</p>
<p>305182 Damper screws Dämpferbefestigung</p>	<p>305189 2x Diff-joint front/rear 2x Mitnehmer Diff vorn/hinten</p>	<p>305197 2x Steering hub 2x Lenkhebel</p>
<p>305183 Front shock tower Dämpferbrücke vorn</p>	<p>305190 Up arm carry front Querlenkerhalter vorne</p>	<p>305198 2x Bevel gear 16 T 2x Kegelritzel 16 Zähne</p>
<p>305184 Rear shock tower Dämpferbrücke hinten</p>	<p>305191 Bevel gear 16 T Kegelritzel 16 Zähne</p>	<p>305199 2x Fronthub 2x Lenkhebelträger</p>
<p>305185 Gear box Getriebegehäuse</p>	<p>305192 2x Suspension arm upper front 2x Querlenker vorn oben</p>	<p>305200 Front diff mount Halteplatte Diff vorn</p>
<p>305185 Gear box Getriebegehäuse</p>	<p>305193 2x Diff joint left + right 2x Diffmitnehmer links + rechts</p>	<p>305201 Braceplate front Versteifungsplatte vorn</p>

Continuation Spare Parts • Ersatzteile Fortsetzung

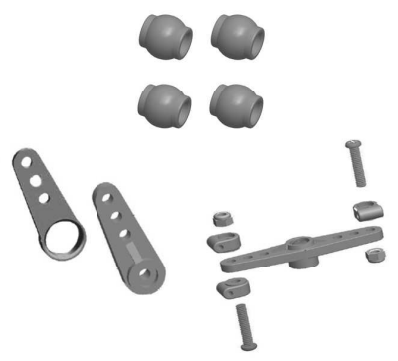
305202 2x Rear upper suspension
2x Querlenker hinten oben



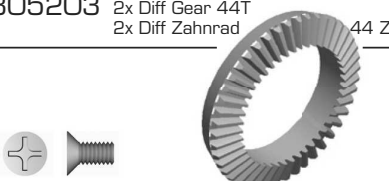
305210 Tank complete
Tank komplett



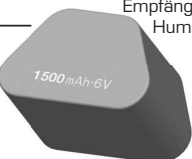
305213 Servo set
Servohorn-Set



305203 2x Diff Gear 44T
2x Diff Zahnrad 44 Z



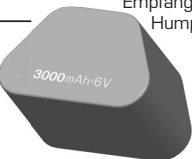
608048 Receiver battery 6V/1500 mAH
Empfängerakku 6V/1500 mAH
Hump Gas Devil



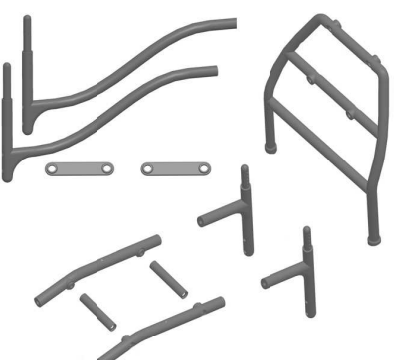
305204 4x Swing shaft left + right
4x Antriebsknochen links + rechts



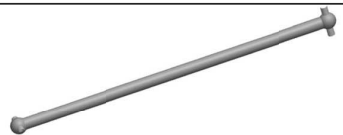
608049 Receiver battery 6V/3000 mAH
Empfängerakku 6V/3000 mAH
Hump Gas Devil



305215 Rollcage-set
Überrollbügel-Set




305205 2x Swing shaft middle front
2x Antriebsknochen vorn Mitte



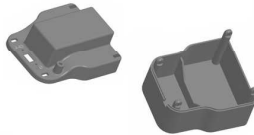
305211 Servo mount
Servohalter



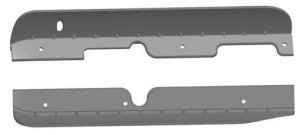
305206 2x Swing shaft middle rear
2x Antriebsknochen hinten Mitte



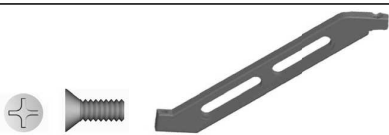
305212 Radio box
Radiobox



305216 Dust-protector
Staubschutz



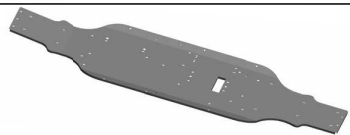
305207 Rear chassis mount
Chassisstrebe hinten




305214 Gear protection
Zahnradschutz




305217 Chassis plate
Chassisplatte



305208 Front chassis mount
Chassisstrebe vorne



305218 Body with decals
Karosserie mit Dekor



305209 Fuel tubes
Kraftstoffschläuche



Continuation Spare Parts • Ersatzteile Fortsetzung

305220 2x Hex hub
2x Radmitnehmer

305221 Diff complete
Diff komplett

305222 Clutchbell
Kupplungsglocke

305223 2x Rear axle
2x Radachse hinten

305013 Rammer set
Rammer Set

11310 5x Antenna tube
5x Antennenröhrchen

32408 2x Wheel hub • 2x Achsschenkel

305224 Pin set
Stifte Set

503024 On/off switch with BEC system
Ein-/Aus-Schalter mit BEC

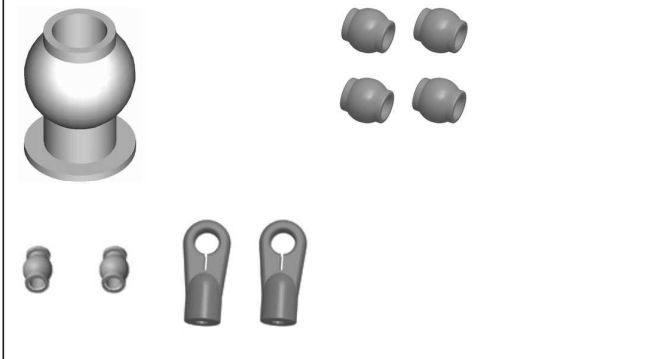
908060 10x Brackets
10x Klammern

305225 Washer and screw nut set
Scheiben- und Muttern-Set
Kit de rondelles et d'écrous
Juego de tuercas y de discos
Set di rondelle e dadi

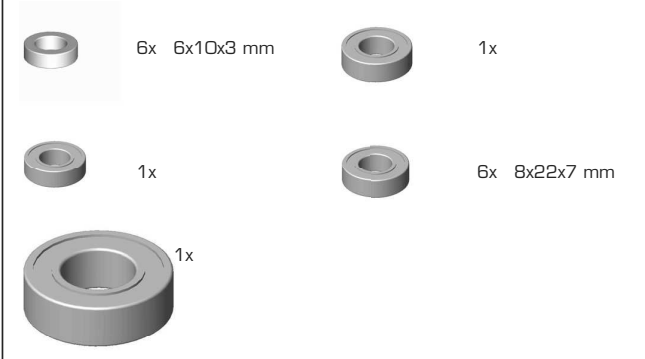
	4x		6x ø 6 mm
	6x M3		6x 16x12,2x0,3 mm
	6x M4		6x 16x12,2x0,6 mm
	6x M5		6x 12x10,1x0,3 mm
	5x M6		6x 12x8,1x1 mm
	6x ø 4 mm		6x 17x6,1x1 mm
	6x ø 5 mm		

Ersatzteile

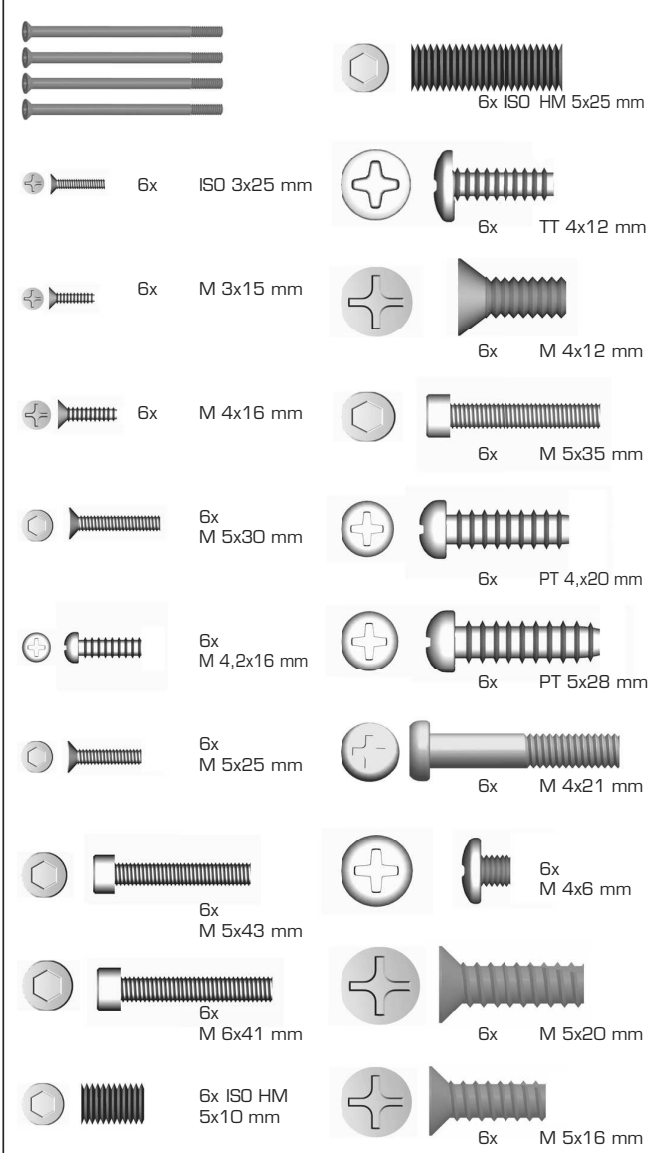
305226 Ball set
Kugelpopf Set
Kit d'embouts sphériques
Juego de cabezales esféricos
Set di testine a sfera



305228 Ball bearing set
Kugellager Set
Kit de roulements à billes
Juego de cojinetes esféricos
Set di cuscinetti a sfera



305227 Screw set
Schrauben-Set
Set des vis
Set de tornillos
Set viti



27 cm³ CARSON Motor • Motor • Moteur • Motor • Motore

Art.-Nr.	Description	Bezeichnung	Description	Descripción	Descrizione
32603	Cylinder head screw M5x22	Zylinderkopfschr. M5x22	Vis de fix. culasse M5x22	Tornillo de culata M5x22	Bullone di fissaggio nella testata M5x22
32607	Screw M5x20	Schraube M5x20	Vis M5x20	Tornillo M5x20	Vite M5x20
32609	Muffler bolt	Auspuff Schraubbolzen	Vis d'échappement	Perno del silenciador	Scarico Spinotto a vite
32615	Ball bearing	Kugellager	Roulement à billes	Rodamiento de bolitas	Cuscinetto a sfera
32616	Rear shaft seal	Wellendichtung hinten	Joint de l'axe arrière	Junta de árbol posterior	Guarnizione per alberi anteriore
32617	Front shaft seal	Wellendichtung vorne	Joint de l'axe avant	Junta del árbol delantero	Guarnizione per alberi anteriore
32618	E-ring	E-Ring	Circlip	Anillo E	Anello-E
32619	Crankcase screw M5x30	Gehäuseschraube M5x30	Vis de l'enveloppe M5x30	Tornillo del carcasa del motor M5x30	Vite a scatola
32631	Clutch spring	Kupplungsfeder	Ressort de l'embrayage	Muelle de embrague	Molla della frizione
32642	Plug cap	Kerzenkappe	Coiffe de bougie	Casquillo del bujía	Candela a coperchio
32643	Spring	Feder	Ressort	Muelle	Molla
32644	Rubber socket	Gummitülle	Douille	Arandela aislante de goma	Rivestimento in gomma
32645	Spacer	Distanzring	Plaque d'écartement	Aro espaciador	Anella distanziatore
32646	Screw M4x20	Schraube M4x20	Vis M4x20	Tornillo M4x20	Vite M4x20
32658	Screw M4x16	Schraube M4x16	Vis M4x16	Tornillo M4x16	Vite M4x16
32698	Choke lever	Chokehebel	Levier de starter	Palanca de arranque	Manetta farfalla di avviamento
32700	Screw M5x60	Schraube M5x60	Vis M5x60	Tornillo M5x60	Vite M5x60
32707	Screw M5x20	Schraube M5x20	Vis M5x20	Tornillo M5x20	Vite M5x20
32709	Screw M4x12	Schraube M4x12	Vis M4x12	Tornillo M4x12	Vite M4x12
32710	Screw TP4.5x18L	Schraube TP4.5x18L	Vis TP4.5x18L	Tornillo TP4.5x18L	Vite TP4 5x18L
32774	Bearing	Lager	Roulement	Cojinete	Cuscinetto
903201	Clutch assembly	Kupplungsbacken	Sabot d'embrayage	Zapatas de embrague	Frizione a ganasce
903202	Clutch case	Kupplungsgehäuse	Boîtier de l'embrayage	Caja del embrague	Scatola della frizione
903203	Crankcase-C	Kurbelgehäuse-C	Enveloppe du vilebrequin	Cárter del motor-C	Scatola della frizione-C
903204	Flywheel	Lüfterrotor	Rotor	Rotor	Ventilatore a rotore
903205	Crankshaft nut M8x1.0	Wellenmutter M8x1.0	Écrou de l'axe M8x1.0	Tuerca M8x1.0 del cigüeñal	Madrevite ad albero M8x1.0
903206	Kill switch A	Aus-Schalter A	Interrupteur A	Interruptor A de desconexión	Interruttore di arresto A
903208	Recoil starter A	Seilzugstarter A	Démarrreur à tirette A	Estárter manual de cable A	Comando flessibile di avviamento
903209	Crankshaft-C	Kurbelwelle-C	Vilebrequin	Cigüeñal-C	Scatola della frizione-C
903210	Gasket cylinder	Zylinderkopfdichtung	Joint de culasse	Junta de culata	Guarnizione della testata
903211	Piston pin	Kolbenbolzen	Axe de piston	Perno del pistón	Perno
903212	E-ring	E-Ring	Circlip	Anillo E	Anello-E
903215	Spark plug	Zündkerze	Bougie	Bujía	Candela di accensione

Art.-Nr.	Description	Bezeichnung	Description	Descripción	Descrizione
903216	Muffler gasket	Auspuffdichtung	Joint d'échappement	Junta del silenciador	Guarnizione per scarico
903219	Coil-A	Zündspule-A	Bobine d'allumage-A	Bobina de encendido A	Bobina di accensione - A
903220	Carburettor gasket	Vergaserdichtung	Joint de carburateur	Junta del carburador	Guarnizione per carburatore
903221	Insulator	Isolator	Isoloir	Aislador	Isolatore
903222	Carburettor-A	Vergaser-A	Carburateur-A	Carburador A	Carburatore-A
903223	Air filter A	Luftfilter-A	Filtre à air A	Filtro de aire A	Guarnizione per scatola
903224	Case gasket	Gehäusedichtung	Joint de l'enveloppe	Junta de caja	Guarnizione di ammissione
903225	Intake gasket	Einlass-Dichtung	Joint de l'isoloir	Junta de entrada	Distanziatore carburatore
903227	Chunk carburettor	Distanzstück Vergaser	Plaque d'écartement	Distanciador	Spinotto
903229	Air filter oil	Luftfilteröl	Huile pour filtre à air	Aceite de filtro	Olio filtro
903230	tuning crankshaft	Tuning-Kurbelwelle	vilebrequin tuning	Eje cigüeñal „tuning“	Albero a gomito „tuning“
903231	Bolt	Bolzen	Boulon	Perno	Rondella
903232	Washer	Unterlegscheibe	Rondelle	Arandela	Spinotto
903233	Bolt	Bolzen	Boulon	Perno	Rondella
903234	Boss	Nabe	Entraîneur d'embrayage	Buje	Mozzo
903235	Clutch case screw M5x16	Gehäuseschraube M5x16	Vis de boîtier M5x16	Tornillo de la caja del embrague M5x16	Vite a scatola M5x16
903236	Cover of fan	Gebälsedeckel	Couvercle de boîtier	Cubierta del ventilador	Coperchio di ventilazione
903237	Cylinder head cover	Zylinderkopf-Abdeckung	Couvercle de culasse	Cubierta de culata	Coperchio del cilindro
903238	Piston	Kolben	Piston	Piston	Fascia
903239	Cylinder	Zylinder	Cylindre	Cilindro	Chiudere il cilindro
903240	Muffler	Schalldämpfer	Échappement	Silenciador	Silenziatore
903242	Kolbenring	Garniture de piston	Aro de pistón	Fascia elastica	Fascia elastica segmento